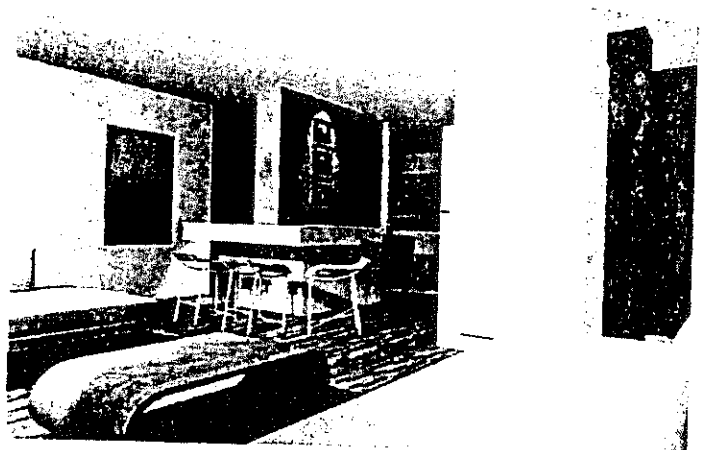
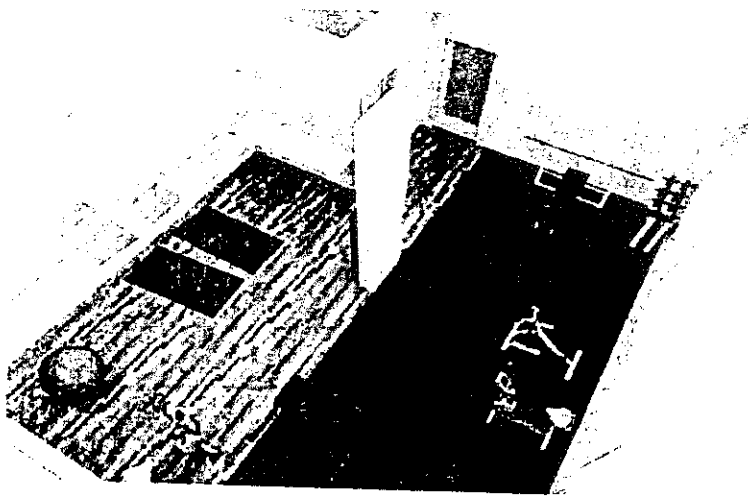
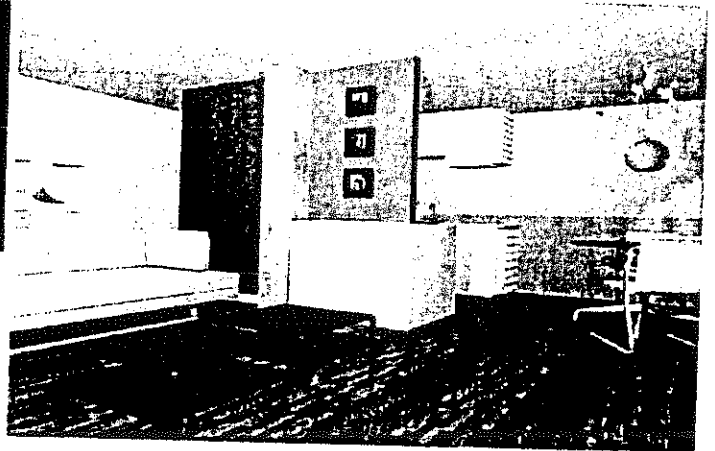
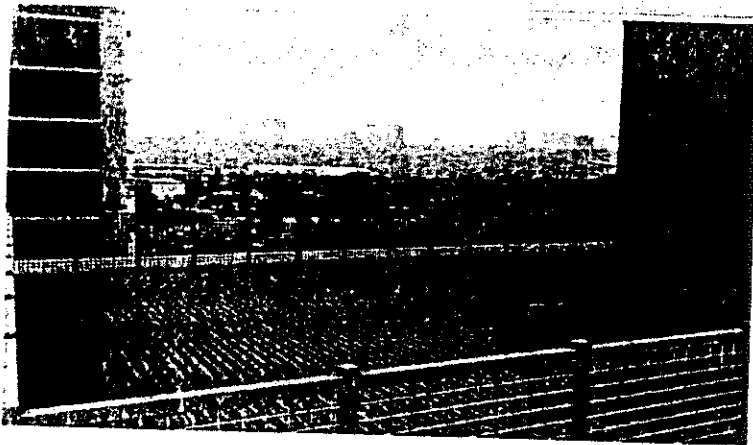
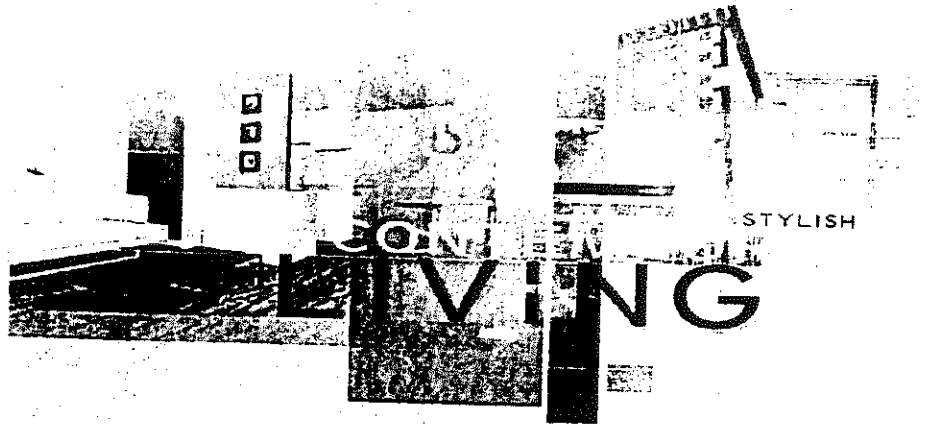
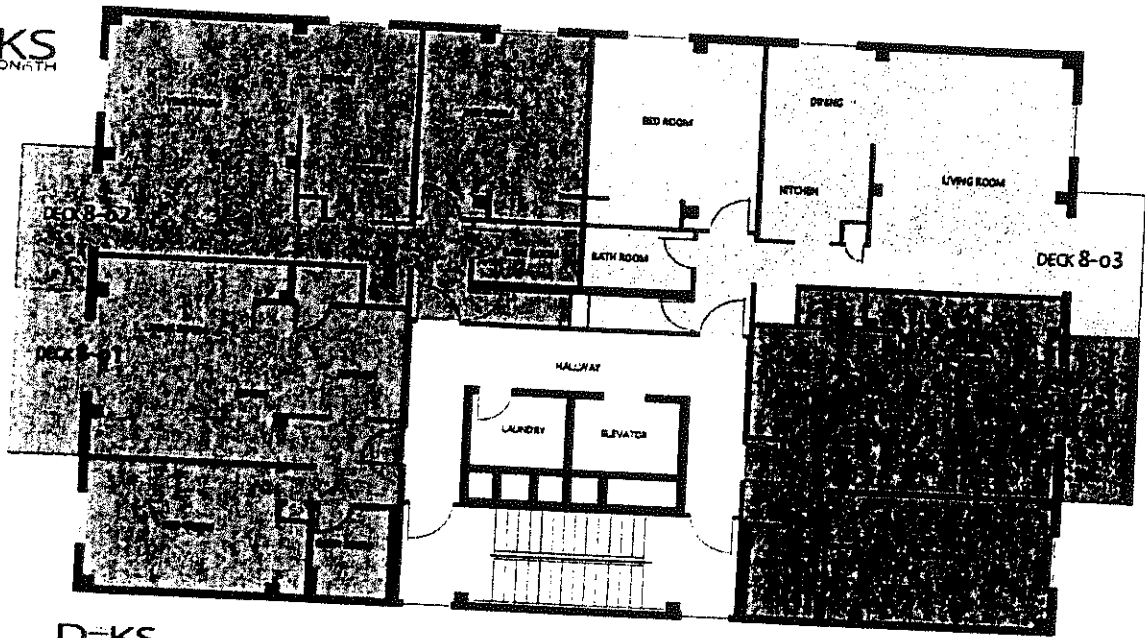


THE
DEKS
ON 6TH

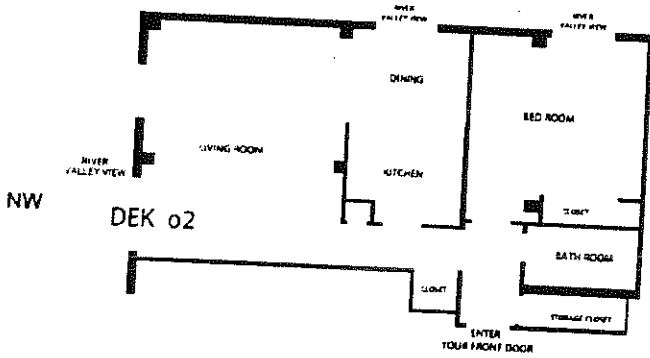


DEKS
DOWNTOWN



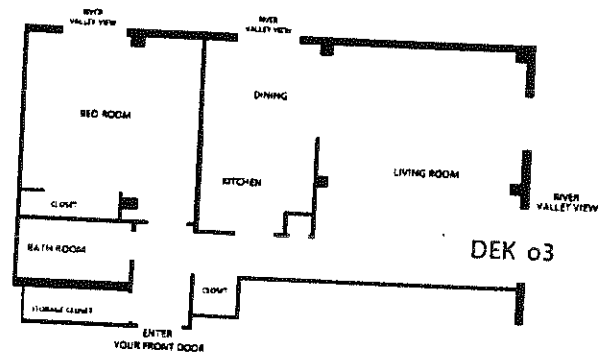
DEKS
DOWNTOWN
A NEW VIEW ON LIFE

DEKS
DOWNTOWN
A NEW VIEW ON LIFE



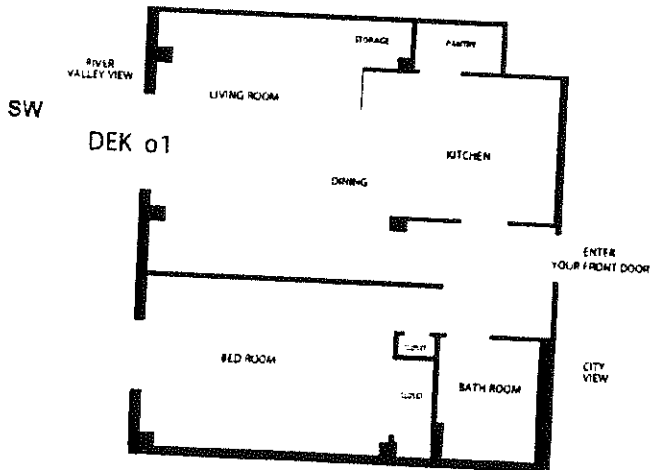
TYPICAL 02 SUITE - 731 Sq.Ft.

DEKS
DOWNTOWN
A NEW VIEW ON LIFE

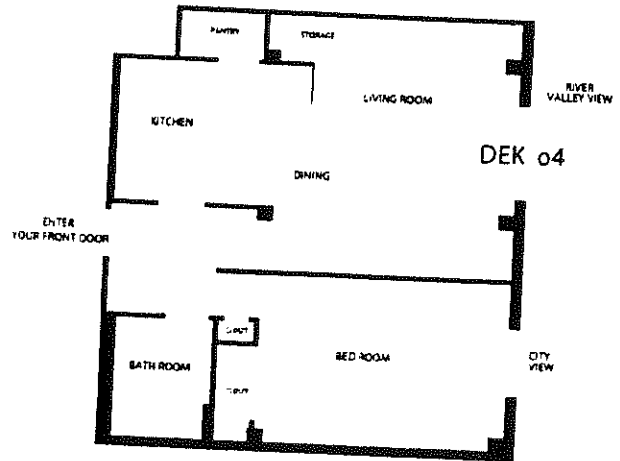


TYPICAL 03 SUITE - 718 Sq.Ft.

DEKS
DOWNTOWN
A NEW VIEW ON LIFE

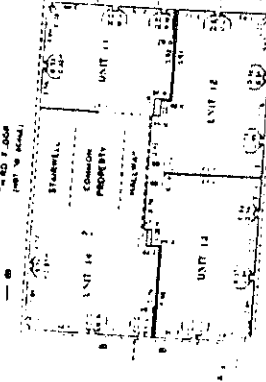
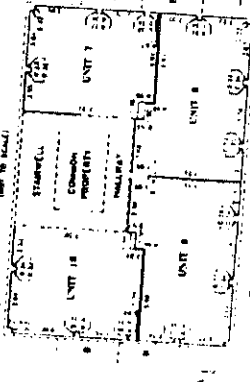
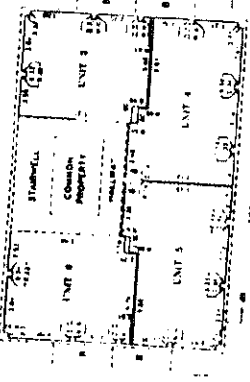
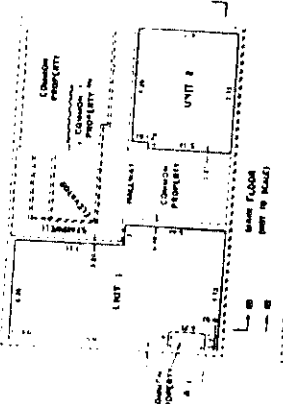
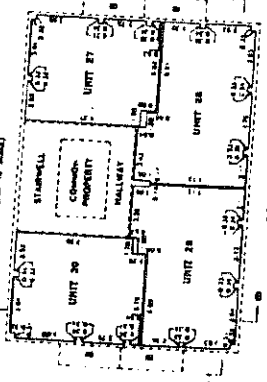
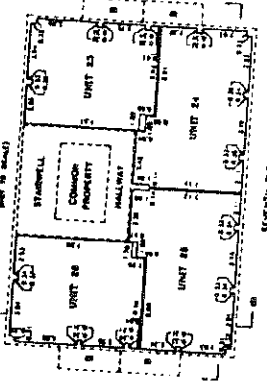
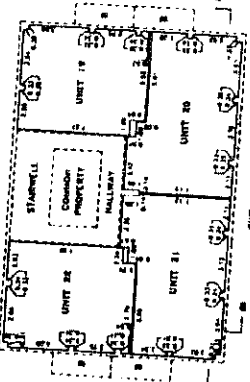
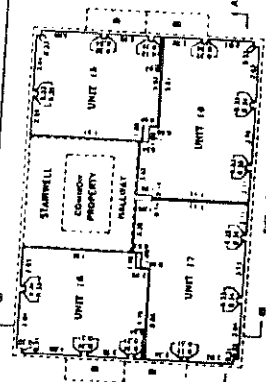
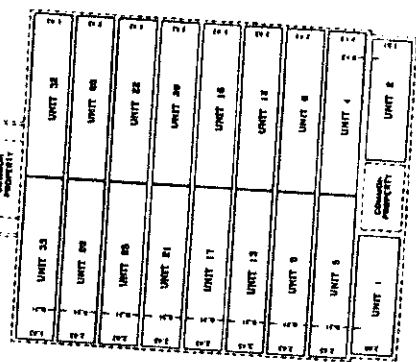
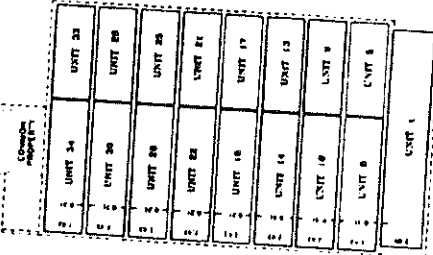
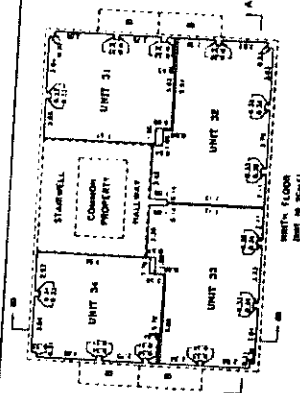


TYPICAL 01 SUITE - 603 Sq.Ft.



TYPICAL 04 SUITE - 689 Sq.Ft.

SHEET 2 OF 2
 UNIT 1000
 PLAN No. 042 1947
 DATED AND REGISTERED
 ON APRIL 7 1984
 REGISTERED AS J.B. JONES
 S. JONES
 A.S. ARCHITECT
 111-113



CANADIAN ENGINEERING & SURVEYS INC.
 111-113
 111-113
 111-113
 111-113

THE DEKS ON 6TH.

